



# Strathfield Girls High School

*dream, believe, inspire, achieve...*



Year 7  
Information Handbook  
2023



SHAMINGTON LEADER

SILVER AWARD

LEADER

BRONZE AWARD

SHAMINGTON  
S  
H  
S  
LEADER

# Welcome to our school



Strathfield Girls High School is a comprehensive high school with over 1100 students and just under 100 staff members. Over 90% of our students come from Non-English Speaking Backgrounds and this diversity is what makes our school a wonderful place to be.

Our school has a proud tradition of providing quality education for students of varying abilities, interests and skills in an environment which places an emphasis on the general well-being and academic progress of each student.

At Strathfield Girls we believe that:

- Learning is our number one priority;
- Learning should be fun;
- All students have the ability to learn and grow;
- Success comes to those who try hard;
- Respecting others and their beliefs is very important;
- We all help one another and work together;
- We are always polite to people inside and out of our school;
- We are proud of our school; we respect school property and wear our uniform at all times; and
- Every student has the right to feel safe and the safety of every student is a priority.

Every student who participates to the best of her ability in activities and programs organised by the staff, will enjoy her time at our school and will leave with an excellent education.

If you are prepared to uphold the values of our school and always strive to perform at your best, we welcome you to Strathfield Girls High School.

<b>PRINCIPAL</b>	<i>Angela Lyris OAM</i>
<b>DEPUTY PRINCIPAL</b>	<i>Kai Liu</i>
<b>DEPUTY PRINCIPAL</b>	<i>Sandhya Maharaj</i>
<b>DEPUTY PRINCIPAL</b>	<i>Anna Paleothodoros</i>
<b>DEPUTY PRINCIPAL</b>	<i>Melinda Wong</i>



# Meet the Executive



Ms Angela Lyris  
Principal



Mr Kai Liu  
Deputy Principal



Ms Sandhya Maharaj  
Deputy Principal



Ms Anna Paleothodoros  
Deputy Principal



Ms Melinda Wong  
Deputy Principal

# Our School Motto

The school's motto, **VITAE LAMPADA TRADITE** "Pass on the Torch of Life", highlights our commitment to quality teaching and learning.

## OUR SCHOOL PURPOSE

Strathfield Girls High School community provides a caring and innovative environment where students are empowered to dream, believe, inspire and achieve their personal best.

## OUR SCHOOL VALUES AND BELIEFS

- Striving for excellence in academic, cultural, creative and sporting pursuits.
- Developing skills for life-long learning.
- Promoting a sense of self-worth, resilience, integrity and respect for self and others to embrace diversity.
- Promoting a sense of leadership to achieve one's personal best.
- Empowering students to be self-reliant, confident, responsible, successful citizens and future-focused leaders.
- Providing a nurturing, safe and inclusive school environment where every student is known, valued and cared for.
- Strengthening the partnerships between students, staff, parents and the local and global community.

## SCHOOL NEWSLETTERS

A newsletter for parents/caregivers is produced weekly to keep you updated with SGHS events. This is a joint initiative of the P & C and the school which contains useful and practical information. Newsletters are available on the SGHS website.

## SOCIAL MEDIA

Keep up to date with Strathfield Girls High School by checking out some of our Social Media pages.

**Twitter** @StrathfieldGHS

**Facebook** @StrathfieldGirlsHigh

**Instagram** @StrathfieldGirlsHighSchool

*dream, believe, inspire, achieve...*



# Behaviour Code

*“The School’s Behaviour Code indicates expectations for school community members that ensure SGHS is a fair, safe and nurturing environment.”*

## GUIDING PRINCIPLES

- **Readiness** for learning
- **Respect** for people, privacy and property
- **Responsibility** for own actions

## EXPECTED BEHAVIOURS

### Readiness for learning behaviours include:

- Attend school every day (unless legally excused);
- Arrive at school and class on time;
- Be prepared for every lesson;
- Actively participate in learning; and
- Aspire and strive to achieve the highest standards of learning.

### Respectful behaviours include:

- Treat one another with dignity;
- Speak and behave courteously within the school and wider community;
- Cooperate with others;
- Develop positive and respectful relationships. Think about the effect on relationships before acting;
- Value the interests, ability and culture of others;
- Dress appropriately by complying with the school uniform and dress code;
- Allow others to work and learn without being disturbed; and
- Care for the school environment.

### Responsible behaviours include:

- Model and follow departmental, school and/or class codes of behaviour and conduct;
- Negotiate and resolve conflict with empathy;
- Take personal responsibility for behaviours and actions;
- Care for self and others;
- Avoid dangerous behaviour and encourage others to avoid dangerous behaviour;
- Make well considered choices;
- Exercise ethical, responsible and respectful use of technology; and
- Be mindful of cyber safety.



# Attendance & Punctuality

Regular attendance at school is essential if students are to maximise their potential. Schools, in partnership with parents, are responsible for promoting the regular attendance of students.

Strathfield Girls High School has an attendance policy which promotes 100% attendance at school, and staff, as a part of their duty of care, monitor part or whole day absences.

## Parents are responsible for:

Enrolling their children of compulsory school age in a government school or registering them with the Board of Studies NSW for home schooling;

Ensuring that their children attend school regularly;

Explaining the absences of their children from school promptly, and within two days, to the school; and

Taking measures to resolve attendance issues involving their children.

We know that success at school is directly linked to consistent attendance. Irregular attendance is the main cause of poor progress at school. It is very important that students attend school regularly and arrive punctually. We seek the support of parents in ensuring their daughter regularly attends school.

The Wellbeing Team monitors student attendance and lateness on a fortnightly basis. It is expected that every girl attends above 95% every term.

## Overseas Travel

All students intending to travel overseas will need to make an appointment with the Principal 4 weeks prior to travelling, in order to have their leave approved.

It is expected that students must consult their teachers to collect any necessary work or assignments prior to travelling. It is the student's responsibility to complete all work missed during their travel period.

Parents must be aware that their daughter's leave will contribute to her overall attendance record. It is expected that all students have an **above 90%** attendance record.

# Schedule of Fees

Core Curriculum Fee	\$100.00
School Bag	\$80.00
School Diary	\$25.00
P&C Contribution	\$50.00
Sporting Carnivals	\$25.00
School Lock	\$15.00
School Locker	\$60.00
Apron	\$10.00
School Hat	\$45.00
Maths Text Protector	\$5.00
Calculator	\$29.00
Safety Goggles	\$10.00
Word Flyers Online Literacy Program	\$10.00
Numeracy Online Program	\$10.00
Sport– Terms 1-4	\$600.00
Gala Day	\$15.00
Technology & Sewing Kit	\$80.00
Technology Workbook	\$40.00
HSIE Geography	\$40.00
Visual Arts Kit	\$80.00
Ukulele	\$40.00
Science Workbook	\$15.00
PDHPE Workbook	\$35.00
Music Fees and Adaptor	\$20.00
<b>TOTAL</b>	<b>\$1439.00 (as of 2022)</b>





# School Uniform

Our uniform is the result of broad consultation within our school community.

**SCHOOL UNIFORM IS COMPULSORY AT STRATHFIELD GIRLS HIGH SCHOOL.**

**Minimal jewellery may be worn at school i.e. sleeper or plain stud earrings, a simple gold or silver necklace and a watch. No face piercings are permitted. No brightly coloured hair or fancy haircuts are permitted.**

Overblouse	White short sleeved peak collar pintuck (Should not be tucked in). White long sleeved peak collar pintuck (Should not be tucked in).
Skirt - Junior	Grey and blue check skirt with two inverted pleats at the front. It should be worn with the hem below the knee. Pleats should not be adjusted.
Skirt – Senior	Blue and grey checked kilt only. This should be worn at mid-calf length.
Jumper	Navy V-neck woollen jumper with the school crest.
Blazer	Navy Blue with school crest compulsory.
School Hat	Navy nylon wide brimmed hat with school crest band. School hats are compulsory for all students.
Tights	Navy or black opaque stockings.
Socks	Plain white socks worn approximately 2cm above the ankle. Knee length socks or socks below the ankle are not acceptable.
Shoes	School shoes which are flat, plain black leather and lace up. For safety purposes, they should cover the top of the foot.
Skivvy	White skivvy worn under the blouse in cold weather.
Scarves/ Gloves/ Ribbons	Navy or white.
Hijab	Plain white or navy hijab.



**Junior Uniform**



**Senior Uniform**



**School Uniforms may be purchased at:**

LOWES, BURWOOD  
Burwood Plaza Burwood  
**Or**  
Pre-Loved Uniform Shop

# School Uniform

## PE/SPORT UNIFORM

The school polo shirt and school navy shorts or track suit must be worn during PE and sports lessons.. Sports shoes must be worn. Students are encouraged to wear sunscreen and plain navy cap when participating in outdoor activities.

**Students must bring their uniform to school for sport on Tuesday.**

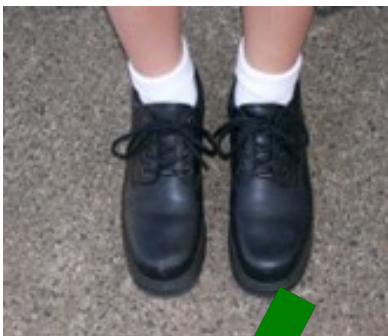
<b>Polo Top</b>	Panelled microfibre with school crest.
<b>Shorts</b>	Navy microfibre mesh with emblem.
<b>Track Suits</b>	Navy/sky panel/piping with emblem.
<b>Socks</b>	White ankle style worn approximately 2cm above the ankle.
<b>Shoes</b>	Sport shoes are required. <b>Canvas shoes are not permitted.</b>



### Important Note Regarding Shoes

Black leather shoes are a very important part of the school uniform and in accordance with Work Health & Safety Requirements. They must be worn at all times.

Canvas shoes are not permitted .



# Parent Commitment to Uniform Policy

Strathfield Girls High School is committed to encouraging students to take responsibility for their own learning and behaviour as this enhances effective teaching and learning. Students, staff, and parents interact in partnership to make our school a happy productive community. The School Uniform Code is an important representation of students' commitment to participate and positively grow within our community.

We ask that the parents support their daughters in following the school Behaviour Code by ensuring that each day their daughter is presenting a ready, respectful and responsible commitment to learning and the school by following the Strathfield Girls High School Uniform Code.

## **I understand that:**

School uniform (incl. bag) is compulsory at Strathfield Girls High School;

**In Terms 2 and 3 school blazers are compulsory;**

**School hats are compulsory for Year 7 students.**

Minimal jewellery may be worn at school i.e. sleepers or plain stud earrings, a simple gold or silver necklace and a watch;

Facial piercings are not permitted;

Coloured hair is not permitted;

No undergarments should be seen through the uniform; and

All items must be clearly labelled with the student's name.

*I understand the high priority that the school places on its students wearing complete and proper uniform during all parts of the school day:*

during school hours;

for travel between school and home; and

at other times, as requested, and while representing the school.

*I, as a parent, for the next 6 years commit to supporting this policy in every way.*



# Bell Times

MONDAY		TUESDAY		WEDNESDAY		THURSDAY		FRIDAY	
Warning Bell	8:42	Warning Bell	8:42	Warning Bell	8:42	Warning Bell	8:42	Warning Bell	8:42
Roll Call	8:45-8:55	Roll Call and SRE	8:45-9:15	Roll Call	8:45-8:55	Roll Call	8:45-8:55	Roll Call	8:45-8:55
Period 1	9:00-10:00	Period 1	9:15-10:10	Period 1	9:00-10:00	Period 1	9:00-10:00	Period 1	9:00-10:00
Period 2	10:05-11:05	Period 2	10:10-11:05	Period 2	10:05-11:05	Period 2	10:05-11:05	Period 2	10:05-11:05
Recess 1	11:05-11:25	Recess 1	11:05-11:25	Recess 1	11:05-11:25	Recess 1	11:05-11:25	Recess 1	11:05-11:25
Period 3	11:25-12:25	Period 3	11:25-12:25	Period 3	11:25-12:25	Period 3	11:25-12:25	Period 3	11:25-12:25
Period 4	12:30-1:30	Lunch 1	12:25-12:45	Period 4	12:30-1:30	Period 4	12:30-1:30	Period 4	12:30-1:30
Lunch 1	1:30-1:50	Lunch 2	12:45-1:05	Lunch 1	1:30-1:50	Lunch 1	1:30-1:50	Lunch 1	1:30-1:50
Lunch 2	1:50-2:10	Period 4	1:30-2:10	Lunch 2	1:50-2:10	Lunch 2	1:50-2:10	Lunch 2	1:50-2:10
Period 5	2:10-3:10	Period 5	2:10-3:10	Period 5	2:10-3:10	Period 5	2:10-3:10	Period 5	2:10-3:10
Welfare/Learning Support Team Meeting 3.30-5.00		Executive Meeting 3.30-5.30		Faculty/Staff Meeting 3.00-4.30		Faculty/Staff Meeting 3.00-4.30			

Legend:	Sport periods	Breaks	Executive Meetings
	Welfare/Learning Support Team Meeting	Assembly	Faculty/Staff Meetings

# Merit System

## STAGE 1

### *Class Awards*



*Students achieve class awards from any of the following categories:*

- Citizenship and Leadership for involvement in SRC, organisation of special days and activities, peer support or for showing initiative.
- Sport representation at the school, zone area or state.
- Participation in cultural activities such as band, choir, multicultural days, drama, debating, public speaking, art exhibitions or fashion parades.
- Community activities for participation and achievement in fund raising activities or providing assistance in the local community.
- Classroom activities for active participation, application or improvement.
- Academic excellence for outstanding performance in class tasks or activities.
- Literacy and numeracy for acknowledgement of improvement in these areas.
- Subject activities for consistent performance and achievement in specific subject area.

## STAGE 2

### *Certificate of Achievement*

Five class awards entitle a student to a Certificate of Achievement.

## STAGE 3

### *Certificate of Distinction*

(Bronze Level)

Four Certificates of Achievement entitle the student to a Certificate of Distinction.

## STAGE 4

### *Certificate of High Distinction*

(Silver/Gold Level)

A student with two Certificates of Distinction will be eligible for a Certificate of High Distinction.

# Merit System

Students will aim for levels of Bronze, Silver and Gold by collecting and submitting their merits for tallying. At each of the levels, students will be awarded with the appropriate badge:



**20 Merits = Bronze Level**

**50 Merits = Silver Level**

**80 Merits = Gold Level**



# Courses Offered

## Years 7 and 8

Chinese	Italian	PDHPE
English	Japanese	Science
French	Vitae Lampada	Sport
Geography	Mathematics	Technology
History	Music	Visual Arts

## Years 9 and 10

Australian History Geography Including Civics & Citizenship	French	Mathematics
Chinese	Food Technology	Music
Child Studies	Information & Software Technology	PDHPE
Commerce	International Studies	Visual Arts
Dance	Italian	Science
Drama	Japanese	Textiles Technology
English	Korean	Visual Design
Film Studies	Vitae Lampada	Careers
History	Work Education	Physical Activity & Sport Studies
	iSTEM	

## Years 11 and 12

Ancient History	Food Technology	Music Course I
Biology	French Beginners	Music Course II
Business Services (VET)	French Continuers	Personal Development, Health & Physical Education
Business Studies	Hospitality (VET)	Physics
Chemistry	Information Processes & Technology	Society and Culture
Chinese Literature	Information Digital Technology (VET)	Sports Coaching (VET)
Chinese In Context	Italian Beginners	Studies of Religion I & II
Chinese Beginners	Italian Continuers	Textiles & Design
Community & Family Studies	Japanese Beginners	Visual Arts
Dance	Japanese Continuers	Vitae Lampada
Drama	Korean In Context	<b>1 UNIT APPROVED CONTENT</b>
Economics	Korean and Literature	<b>ENDORSED COURSES</b>
English ESL	Legal Studies	Photography
English Standard	Mathematics	Sport, Lifestyle & Recreation
English Advanced	General Mathematics	Visual Design Elements
English Extension 1	Mathematics Extension 1	Ceramics
English Fundamentals	Modern History	Engineering Studies
Entertainment (VET)		

TAFE courses are offered to students from Years 11 and 12. Subjects include: Office Studies, Child Studies, Travel, Hospitality, Computer Aided Drafting (CAD), Fashion, Mechanical Engineering, Design and Veterinary Nursing etc.

# Student Wellbeing

Strathfield Girls High School provides a range of welfare programs and activities to complement the comprehensive curriculum offered by the school. The school welfare team is made up of a dedicated team of teachers. Welfare programs are supervised by the Welfare Head Teacher while the two Deputy Principals share the overall responsibility for the student body. Year Advisers and teachers work closely with the Deputies and Head Teacher Welfare to ensure students are growing and maturing in an environment that is nurturing and positive. Students, staff, parents or other members of our school community who would like a full copy of the Welfare Policy should contact the Administration Office.

## WELFARE PROGRAMS

**Transition Program**— This program is designed to help students make the transition from Primary to High School a positive and welcoming experience. Students are encouraged to come to the school during Year 6 to get to know the school, teachers and staff in order to make the transition more comfortable and to encourage them to feel secure in their new environment.

**Peer Mentor Program**— Students are trained to assist students when they first arrive at school to settle into the school routine. A peer mentor is able to help answer questions about the school, provide support while a new student is settling in and making new friends.

**Peer Support Program**— The Peer Support Program is regarded as an integral part of our school's overall Student Welfare Program, and will be coordinated by Ms K Li. It is run for Year 7 with the support of selected and specially trained Year 10 student leaders. The program helps develop skills in effective communication, decision-making, problem solving, assertiveness & conflict resolution and assists Year 7 each year to settle into the school.

**Big Sister Program**— Our Big Sister Program is an informal program that encourages each of our older students to informally meet students and talk about school issues. Aimed at encouraging a close knit school community this program allows each student to help and support other students in the school.



CONNECT



SUCCEED



THRIVE



# Student Wellbeing

**Study Skills Workshops**—“Be Smart” and “Stepping Up” are study skills workshops for junior students while ‘Bright Sparks’ and ‘Stressbusters’ are workshops for Year 11 and 12 students. Workshops support student learning and empower them to succeed. Workshops focus on time management, note making, organisation and exam skills. Motivation and dealing with stress are also addressed along with the need to keep a balance between study, physical activity, diet and relaxation.

**Vitae Lampada (Welfare) Programs**—This program is run in Years 7 – 12 and helps to provide a well rounded education. Topics covered include: settling in to high school, friendship, social skills, responsibilities, crime prevention, managing personal health, getting on with people, how to get help, local services, domestic violence, bullying, body image, dealing with conflict, homophobia and being a good member of the community.

**Anti-Bullying Program**—The School does not tolerate bullying behaviour. Anti-bullying units of work, including development of conflict resolution skills and the need to report bullying behaviour, are integrated into the curriculum, especially the Vitae Lampada Programs.

**School Assemblies** – Regular school assemblies build strong year group bonds and encourage students to see themselves as part of the group. Assemblies provide the opportunity to celebrate student success and address issues of interest to particular year groups.

## **STUDENT LEADERSHIP—SRC AND PREFECT BODY**

The Student Representative Council and Prefect Body are dynamic groups of students who are elected by the whole student body to represent students in all years. The council meets regularly to discuss issues raised by the students it represents and has regular meetings with the Principal and other invited staff members to discuss improvements and changes. In addition, members from the Student Leadership Groups participate with staff and parents/caregivers in developing our School’s action plans, are members of the school’s action groups, and participate in assemblies. To be eligible for nomination to the SRC, students must have an exemplary attendance, punctuality, behaviour and uniform record.



# Extra Curricular Activities

- Mock Trial Team
- Streamwatch
- Australian Business Week (Year 10)
- ASX Share Market Game
- Young Conspiracy (Amnesty Australia)
- Tournament of Minds
- Literature Extension Program (Years 9 & 10)
- Cultures Club (for International Students)
- Theatre sports
- Mahboba's Promise concert
- Clean up Australia Day Initiative
- White Ribbon Day
- Table Tennis
- Badminton
- Film Club
- Kind Club
- Anime Club
- Science Club
- Robotics Club
- Art Club
- Social Justice
- Jesmond Aged Care Volunteering
- Coding Club
- Junior Drama Club
- Orchestra
- Senior Choir
- Strathfield Divas (Year 7)
- Stage Band
- Percussion Ensemble
- String Quartet
- Duke Of Edinburgh
- Confidance



# Extension Activities within the Curriculum

## ENGLISH

Within their classes students are challenged by study of both contemporary texts and established literary works including Shakespearean drama. Additionally, all students are encouraged to enter the annual within school Speakers' Cup competition. Students are offered a range of optional activities which include debating, public speaking and participation in a variety of competitions including:

Australian Schools English Competition;

- Jessie Street National Women's Library Essay Prize;
- Sydney Morning Herald Young Writer of the Year;
- Sydney Morning Herald Young Playwright's Award;
- National Junior Poetry Awards;
- Dorothea Mackellar Poetry Awards;
- Taronga Foundation Poetry Prize;
- Short Story Writing Competition;
- Reelife Short Film Festival;
- UALA Awards for Creative Writing & Culture & Ethics;
- The Somerset Celebration of Literature and National Poetry Prize;
- Novella Writing Competition;
- Premieres Debating Competition; and
- Theatre sports Schools Competition.



# Extension Activities within the Curriculum

## MATHEMATICS

Mathematics classes are organised to allow students to work at a level which challenges them to achieve their personal best. Students with special interests and abilities in mathematics are encouraged to participate in several enrichment experiences including:

- Math Challenge (Years 8—10);
- Mathsearch (Year 11);
- Investigating Mathematics (Year 7); and
- Westpac National Math Competition (Years 7—12).

## LEARNING AND ENGAGEMENT

The Learning Support faculty runs:

- The United Cultures Club, a club for International students and their friends to meet and socialise;
- Scrabble Off where Years 7 to 10 English students compete to determine a champion for each class who then compete against each other to determine the Scrabble champion of the year;
- MS Readathon Competition; and
- Premier's Reading Challenge.

This faculty supports students to improve their literacy and numeracy skills.

## HISTORY

The history faculty offers a range of courses for Years 7—12 that create diverse opportunities for gifted and talented students to develop and extend their passion for and knowledge of History.

In addition, students are offered a range of optional activities which include:

- History Debating Competition;
- National History Essay Competition;
- Simpson Memorial Essay Competition;
- History Extension Essay Prize; and
- HSC Lecture Days.



# Extension Activities within the Curriculum

## SCIENCE

The Years 7—10 Science Syllabus provides ample opportunity for extension and enrichment experiences. Students are encouraged to engage in critical and creative thinking in class and assignments are targeted to expand students' range of learning experiences. Students are offered a range of optional activities which include:

- Australian Schools Science Competition;
- RACI National Chemistry Quiz;
- Young Scientist Competition;
- RACI National Titration Competition;
- BHP Science Prize;
- National Science Youth Forum (Year 11 only);
- Siemens Science Experience (Year 9 only);
- Science Gifted & Talented Discovery program (USYD); and
- CSIRO Student Research Scheme.

## PERSONAL DEVELOPMENT /HEALTH/ PHYSICAL EDUCATION

Within the broad curriculum (including sport) the PD/H/PE program offers diverse opportunities for all students.

This includes a wide variety of sports and gala days. Dance is offered as an elective in Years 9 & 10.

Opportunities are provided for coaching and refereeing as well as participation at an elite level. Extension and enrichment experiences are provided through carnival participation as well as state and national competitions.

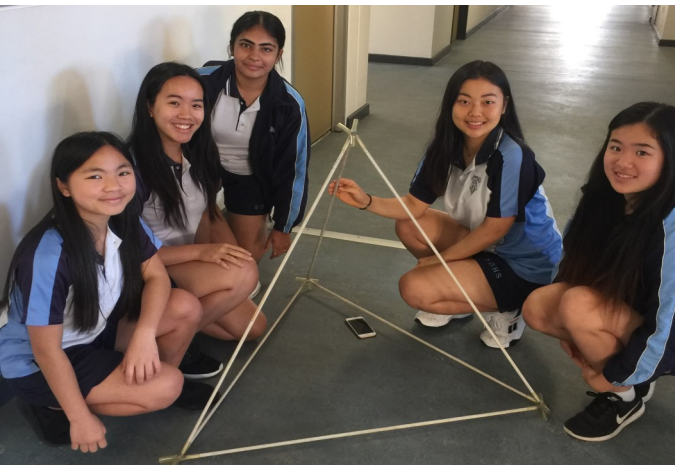


# Extension Activities within the Curriculum

## SOCIAL SCIENCE

Social Science classes are organised within subjects to provide students with a variety of extension activities to support their achievement. Students are actively encouraged to participate in enrichment activities including:

- Royal Geographic Society of QLD Competition;
- AMP Economics & Business Studies competitions (Year 11 and 12);
- HSC Lecture Days;
- NSW Department of Fair Trading Commerce Competition;
- Nomination for Australian Business Week state program;
- Girls In Property;
- Young Achievers Australia; and
- Year 11 Business Plan Competition.



# Extension Activities within the Curriculum

## TECHNOLOGY AND APPLIED STUDIES

The TAS faculty offers a range of courses for Years 7—12 which create diverse opportunities for talented students to develop and extend their knowledge and skills in computing courses, Technology (Mandatory), Food & Textiles Technology, Textiles Technology, Information & Software Technology, Information Processes & Technology and Hospitality. Within the regular class activities, 'design briefs' offer the opportunity for extension activities due to the open-ended design briefs.

## iSTEM

iSTEM is a School Developed Board Endorsed Course (SDBEC) which has been approved by the NSW Education Standards Authority (NESA) and forms part of a student's academic record in NSW.

### **iSTEM incorporates the following areas:**

Mechatronics, Aerodynamics, Biotechnology, Engineering, Statistics, 3D CAD/CAM, Surveying, Aerospace and Motion modules.

We are also running a STEM project with our Year 7 cohort in collaboration with Sydney University. We have also been supporting neighbouring primary schools in the area of Robotics.

## LANGUAGES

Language study offers many opportunities to extend students' knowledge and experience. These are embedded in the courses which they pursue. Students are able to sample literature and arts of other countries, develop an understanding and respect for other cultures and ways of life and become more accepting of diversity.



# Extension Activities within the Curriculum

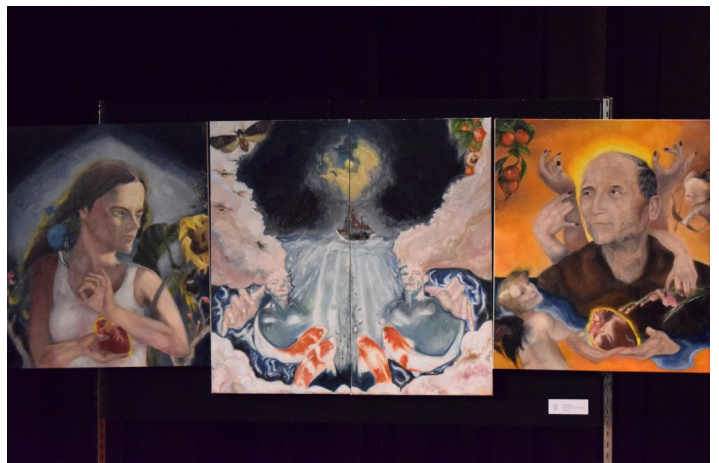
## CREATIVE ARTS

The nature of creative arts subjects, primarily Music and Visual Arts, includes built in opportunities for talented students to excel. Opportunities to participate in local and state competitions and to display art works within the community are actively encouraged. The music teachers also encourage tuition from talented tutors in a great variety of instruments. The Creative Arts teachers actively encourage and support the use of developing technologies in a variety of ways. Outstanding success has been achieved in competitions such as Operation Art.

## EXTRACURRICULAR MUSIC

All students have the opportunity of learning an Orchestral instrument. These are:

- Woodwind instruments i.e. clarinet, oboe, flute, bassoon, saxophone (alto and tenor);
- Strings i.e. violin, viola, cello or double bass;
- Brass (trumpet, trombone and French horn);
- Percussion (drums);
- Vocal; and
- Guitar.





# Extension Activities within the Curriculum

## DRAMA AND DANCE

Students may elect to study drama and/or dance in both the junior and senior school. In addition, students may audition for the annual Dance Festival or the Drama Night, to which parents, friends and teachers are invited to witness student work. Furthermore, every year senior students are encouraged and supported to apply for the Griffin Theatre Ambassadors program, which allows them a one-year residency with the Griffin Theatre Company, giving them access and insights into theatre production, front-of house, workshops and free performances. Our students also participate in the Granville and School Spectacular.

There is a subject contribution for drama of \$45.00 per year to cover make-up, costuming, hiring, subsidy of some excursions and set costs. In comparison to, for example, an ATYP 8 week course or a drop-in class at the Actor's Centre, this is a very modest contribution.



# Homework Help Program

It is expected that students will have homework set regularly. This homework will be related to the topics covered in class. The completion of this homework is an important part of the learning process. In addition to homework, it is important that students develop their own study schedule and regularly review their classwork.

In Years 7 and 8 you are expected to study 1-1.5 hours per night.

Homework is a valuable part of schooling as it allows for practising, extending and consolidating work done in class. Homework provides training for students in planning and organising their time. During assessment periods this will increase. Homework can include long-term assignments; completion of classwork or revision work; exercises or short-term tasks; completion of Literacy and Numeracy booklets; and silent reading.

**Homework Help is a free after-school program to help students with their homework and study. It provides small group tutoring to students every day after school between 3:10pm-6.30pm.**

We offer every student the opportunity to participate in this program and it is **strongly recommended** that they take advantage of the assistance to help them with their transition into Year 7.

Staff from a variety of subjects are available to support students, as well as professional Mathematics and Science teachers that have been employed by the school specifically for the Homework Help Program.

While at Homework Help, students will be supervised at all times.



# Bring Your Own Device BYOD

## Device Specifications and Minimum System Requirements

Under the BYOD Program, personal computing devices are required to be brought to school to assist with student learning. This device needs to meet Device Specifications that are recommended by the school and listed below.

The device specifications identify the minimum system requirements/hardware specifications for student devices and offer guidance on some suggested makes and models so that parents are fully informed about requirements.

While all devices meet the minimum system requirements/hardware specifications, the school strongly recommends that students choose a laptop device to ensure that the BYOD Program maximises their learning experiences.

<b>Wireless Connectivity</b>	The departments Wi-Fi network installed in high schools operates on the 802.11n 5GHz standard. <b>Devices that do not support this standard will not be able to connect</b> unless a suitable USB Wi-Fi dongle is purchased.
<b>Operating System</b>	The current or prior version of Microsoft windows.
<b>Battery Life</b>	A minimum of 5hrs battery life to last the school day.
<b>Memory and RAM</b>	A minimum specification of 200GB of storage and 8GB of RAM are needed to process and store data effectively. Higher specifications are always recommended.
<b>Hardware Features</b>	A camera and microphone feature are required.
<b>Ergonomics</b>	Reasonable sized screen and a sturdy keyboard to enable continuous use throughout the day. A lightweight device is preferable for ease of carrying.



# Bring Your Own Device BYOD

## Accessories

**Carry case:** a laptop carry case will further protect your device from damage.

**Insurance and Warranty:** Be aware of the terms of insurance policies/warranties for your device. The school will not accept responsibility for the loss or breakage of your device.

**Back-up of Storage:** Consider a portable hard drive as an appropriate source of back-up storage for essential documents.

## Software and Apps

All software and applications should be fully updated. Students will be advised by their teachers what software is required in line with the school curriculum requirements.

NSW Public School students can download a **free copy of Microsoft Office** (for Windows & Mac) and some other software at: <http://nsw-students.onthehub.com/>, and this also applies to upgrades of Windows if required. Students will need to register with their DoE email addresses ending in “@education.nsw.gov.au”.

It is expected that all devices will have Microsoft Office installed.



# Opal Card & Travel

The School Opal Card gives eligible students free or discounted travel between home and school using the train, bus, ferry and light rail services you nominate in your application.

To be eligible for a School Opal card, students need to live within a 2.0km straight line distance or 2.9km walking distance from the school.

A new application is only required if the student has not had a School Opal card before. Parents whose children already have a School Opal Card and are changing schools will need to update their Opal card for the new school year before mid-December at <https://transportnsw.info/apps>.

## How to Apply

Once the new school has confirmed the student's enrolment, complete the application at <https://apps.transport.nsw.gov.au/ssts/#/applyNow>.

Print, sign and date the completed online application.

Once approved, the School Opal card will be sent to the address provided on the application.

If you live too close to be eligible for free travel, you may still qualify for a School Term Bus Pass, which offers travel on buses between home and school at a discounted rate for the whole school term.

The School Opal card is only for travel to and from school. So it's a good idea to get a Child/Youth Opal card for travel after hours, on weekends or during school holidays.

If you have any questions or need further information, please visit <https://transportnsw.info/travel-info/school-travel> or call 131 500.

## Code of Conduct for Students on School Buses

Students are expected to be courteous and responsible, and follow the school student's code of conduct when travelling between home and school.

To ensure their safety and the comfort of other passengers, students must:

Behave safely at all times;

Respect the needs and comfort of other passengers by behaving appropriately at all times (e.g., no offensive language, fighting, spitting, placing feet on seats or throwing objects in or from the bus);

Protect bus property and report any vandalism;

Tap their Opal Card for the driver on boarding, or when requested by NSW Transit Officers;

Only use the travel pass for its intended purpose;

Maintain possession of the travel pass at all times;

Follow the driver's instructions about safety on the buses;

Not eat or drink on the bus;

Keep arms, legs and other parts of the body inside the bus; and

Only attract the attention of the driver in case of emergency.

# School Communication

## School Newsletter

The school newsletter is published once a week. The newsletter link can be accessed on the school's website. If you have subscribed to the school's app (see below) you will get a notification on publication.

Strathfield Girls has a culture of celebrating student achievements, and good news stories are regularly published in the newsletter, as well as sporting results, school notices and events.



## School Bytes

Statement of Accounts and communication from the school will be sent to parents/carers via email using a system called School Bytes.

Statements will have a direct link to make a secure payment online through the Westpac Parent Online Payment (POP) system. (Visa, Mastercard, credit/debit cards accepted).

## Keep up to date with Strathfield Girls High School on social media

Follow our social media pages to get all the updates on what is happening in our school community.

**Twitter:** @StrathfieldGHS

**Facebook:** @StrathfieldGirlsHigh

**Instagram:** @strathfieldgirlshighschool



# Strathfield Girls High School

## Enrolment Timeline for Year 7 2023



Date 2022	Action by	Action to be taken
7 March	Parents, students	Attend Information Evening at Strathfield Girls High School.  The Information Evening, will be a virtual tour, available on our school website on Monday 7 March 2022.
By Early-March	Primary Schools	All primary schools have to issue parents/caregivers the <b><i>Moving into Year 7 in an NSW Government school in 2023</i></b> (EOI) booklet for placement in secondary school.
By 18 March	Parents/ caregivers	Parents need to return the EOI form located in the <b><i>Moving into Year 7 in an NSW Government school in 2023</i></b> (EOI) booklet to their primary school.  Please note:  <b><i>Local students</i></b> will be able to attend Strathfield Girls High School, provided documentation supports the school's enrolment policy.  <b><i>Non- local students: (See following page for more information)</i></b>  Attach a <b>resume</b> of your daughter's interests, abilities and achievements both in and out of school.  Ask your primary <b>school principal to endorse</b> your daughter's application.  List SGHS as your <b>Choice 1</b> . Due to the high demand for the school, <b>Choices 2 &amp; 3 will not be considered</b> .  <b>Private school students</b> need to collect (also on our website) and return their EOI forms directly to Strathfield Girls High School.
By 5 April	Primary Schools	Final day for primary schools to copy and forward EOI forms to Choice 1 non-local schools. <b>Private school students</b> need to collect and return their EOI forms by this date to Strathfield Girls High School.
By 11 May	Secondary Schools	<b><u>Round 1</u></b>  Convene a placement panel to consider non-local enrolment applications (Deputy Principal, Head Teacher Wellbeing, Year Advisor, Parent Representative and Enrolment Officer)  Review Choice 1 application forms  Advise primary schools and parents/caregivers of outcome of Choice 1 non-local applications  Compile a waiting list
By 2 September	Secondary Principal	All confirmation of enrolment letters sent to parents/caregivers.
November	Principal, Parents and Students	SGHS invite all successful applicants and their parents/caregivers to <b>an interview with the Principal</b> . The aim of this interview is to gather information about students such as learning outcomes, leadership skills, extra-curricular and sporting interests as well as family/welfare concerns. Valuable information is also given to students about camp etc. These interviews enable us to support your daughter through her transition to high school.
Tuesday, 29 November	Secondary Schools	<b>Orientation Day</b> for all accepted Year 6 students and parents at 9:30am in the School Hall.

# Strathfield Girls High School

## Non—local Applicants



For non – local applications, it is a requirement that the student submits an application endorsed by the Principal, a portfolio of their results, reports and achievements throughout their primary years.

These include:

- ◆ Principal endorsement
- ◆ Students Reports Years 5 & 6
- ◆ NAPLAN Reports
- ◆ Academic Achievements
- ◆ Sporting Achievements
- ◆ Community Engagement
- ◆ Students interests and hobbies
- ◆ Character references



*dream, believe, inspire, achieve...*





**STRATHFIELD GIRLS**  
A LANGUAGES HIGH SCHOOL

Designed by  
18 JUN 12 2011



Strathfield Girls High School

116 Albert Road

Strathfield NSW 2135

Website <https://strathfieg-h.schools.nsw.gov.au/>

Telephone 9746 6990

Fax 9746 3517

Email [strathfieg-h.school@det.nsw.edu.au](mailto:strathfieg-h.school@det.nsw.edu.au)

