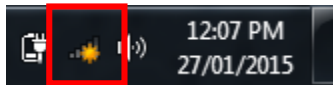


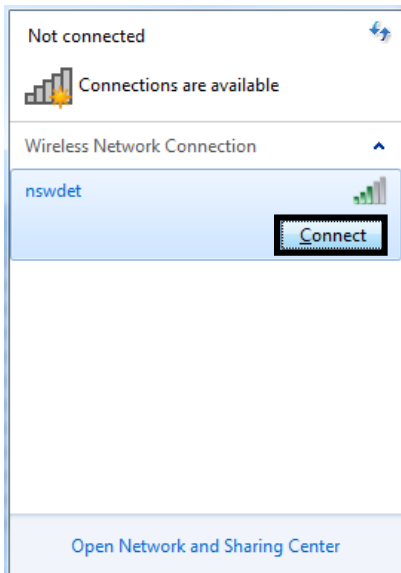
# BYOD – connecting to the wireless

## Windows 7

- 1) Click on the wireless icon (bottom right)

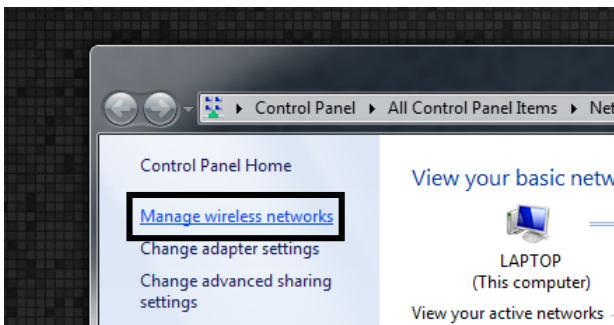


- 2) Select detnsw from the list and click connect



- 3) Enter your internet username as follows  
Username: lisa.simpson@detnsw  
Password: \*\*\*\*\*  
Then press enter, if successful you will be connected to the wireless, and don't need to go any further. **If the process fails, click cancel and proceed to step 4**

- 4) Open up the wireless menu again (click the icon) then click "Open Network and Sharing Center" then "Manage wireless networks"



- 5) Click Add, then add in the following details:

- Network name: detnsw
- Security type: WPA2-Enterprise
- Encryption type: AES

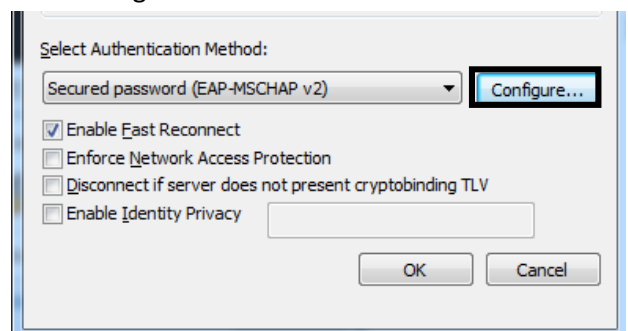
Also ensure that "Start this connection automatically" is checked.

- 6) Then click next, and "Change connection settings"

- 7) Select the security tab, and click settings

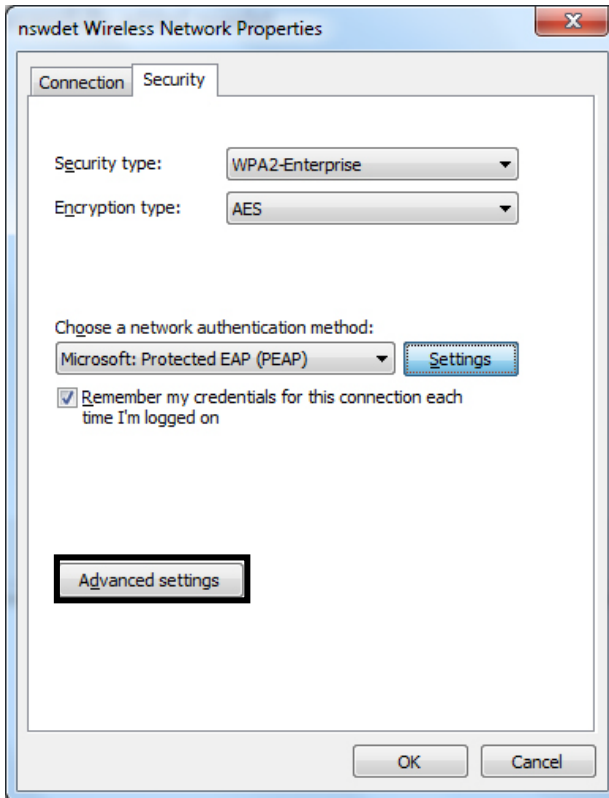


- 8) Then configure:

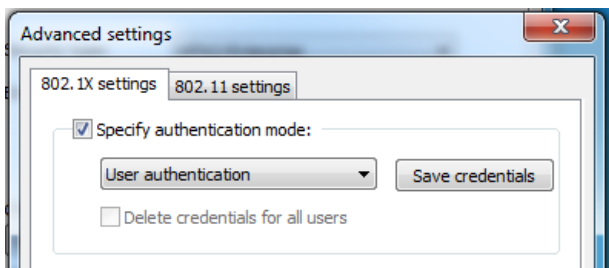


- 9) Uncheck "Automatically use my Windows login name and password". Then press OK, and then OK again to close the "Protected EAP" window. You should be back at the security tab.

10) Click on Advanced settings



11) Tick "Specify authentication mode" and select "User Authentication" from the drop down list".



12) Press the "Save credentials" button, then put in your internet username and password, example:

Username: Lisa.simpson@detnsw

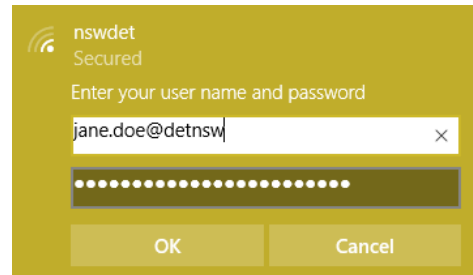
Password: \*\*\*\*\*

Then press OK on each of the remaining open windows to complete the process

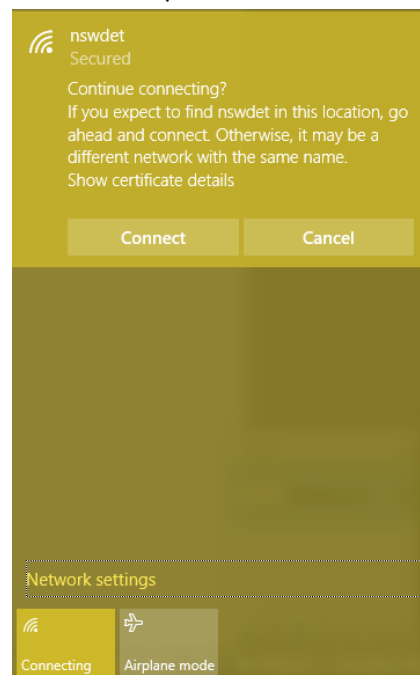
13) Click on the network icon in the bottom hand corner, and select detnsw from the list to try connecting again.

## Windows 10

- 1) Click on the wireless icon in the bottom right hand corner of the screen
- 2) Click on detnsw, then connect
- 3) Enter your internet username and password **adding @detnsw** to the end of your username



- 4) Press continue/connect when prompted, this will accept the network certificate.



- 5) You may also be prompted to enter your proxy username and password, this is the same as previously entered, including **@detnsw** at the end of your username

## iPads

- 1) Open the settings app, and select Wi-Fi from the list on the left of the screen
- 2) Click on the arrow to the right of the detnsw option
- 3) Down the bottom of the screen, for HTTP proxy, select the Auto option, leave the field blank, and press enter.
- 4) Enter your internet username (with @detnsw) and password then press Join, for example:  
Username: Lisa.simpson@detnsw  
Password: \*\*\*\*\*
- 5) It will ask you to accept a Certificate, click "Accept" to connect to the wireless

## Android devices

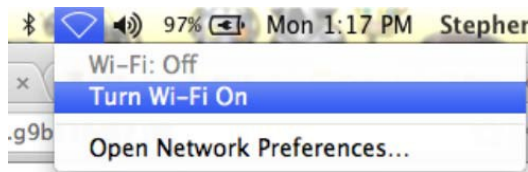
- 1) Open your settings app, and select Wifi/Wireless from the list
- 2) Select detnsw from the list
- 3) Make sure the following settings (if available) are configured as follows:
  - Security: 802.1x EAP
  - EAP Method: PEAP
  - Phase 2 Authentication: MSCHAPV2
  - No certificate selectedYou will also need to specify your username and password for the wireless, as an example example:
  - Identity: Lisa.simpson@detnsw (don't forget the @detnsw)
  - Password: \*\*\*\*\*
  - Tick to enable Advanced settings
  - Proxy settings: manual
  - Proxy hostname: proxy.det.nsw.edu.au
  - proxy port: 8080
- 2) Then press connect

## Chromebooks

- 1) Start up the chromebook as normal
- 2) When asked, select detnsw from the network list, and use the following details:
  - SSID: detnsw
  - EAP method: PEAP
  - Phase 2 authentication: MSCHAPv2
  - Server CA certificate: Do not check
  - User certificate: None installed
  - Identity: Lisa.simpson@detnsw (don't forget the @detnsw)
  - Password: \*\*\*\*\*
- 3) On the bottom right hand corner, click on the WiFi symbol. Then click on **No network** and **detnsw**.
- 4) Click on **Settings**.
- 5) Put a tick next to **Allow proxies for shared networks**.
- 6) Click on the WiFi symbol on the bottom right hand corner of the desktop again and click on **Connected to detnsw**.
- 7) Click on **detnsw**. This will open up a window with Connection and Proxy tabs. Click on Proxy and fill in the following details:
  - Manual Proxy configuration checked
  - Use the same proxy for all protocols checked
  - HTTP Proxy: proxy.det.nsw.edu.au
  - Port: 8080
- 8) Open the Chrome browser and go on to any internet site. You will be asked to fill in your portal username and password. Type in your portal username and password.

## Connecting a Mac to the school wireless

- 1) Click on the Wi-Fi icon in the top right hand corner, and ensure Wi-Fi is turned on



- 2) Select detnsw from the drop down list
- 3) Enter your internet username as follows  
Username: lisa.simpson@detnsw  
Password: \*\*\*\*\*

- 4) You should now be connected to the wireless (shown by a tick)



- 5) Select Open Network Preferences, then press Advanced (near the bottom of the window)
- 6) Select the proxies tab and ensure that Auto Proxy Discovery is checked

